



## Logging into Show My Homework

### Parent Guide – May 2020

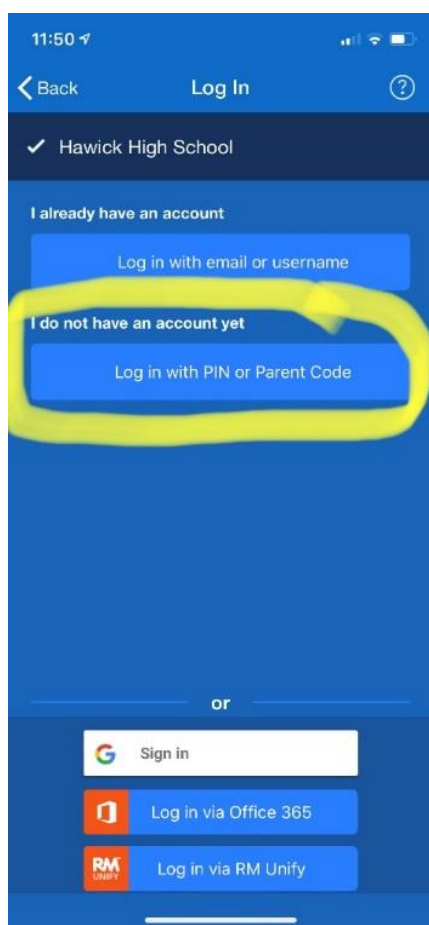


As a parent, you will receive a login letter from your child's school with a code that you will need to use to create your Satchel One parent account. If you have not received a letter please contact the school on [hhs@scotborders.gov.uk](mailto:hhs@scotborders.gov.uk) and we will issue you with your code.

You can use the same code to create up to 5 parent/guardian accounts, so feel free to share this with those that need access to your child's homework details. Once you have your code, follow these instructions to create your account

#### On a mobile device

Using a smartphone or tablet? Download the [iOS](#) (Apple) or [Android](#) app.



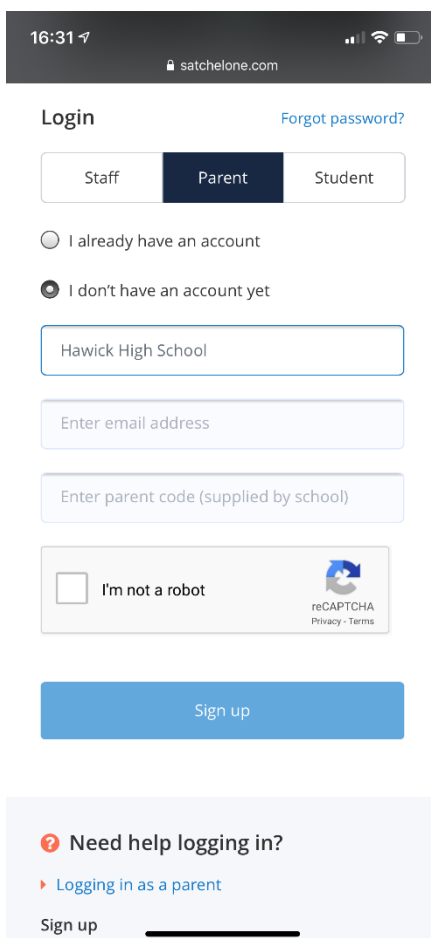
1. Search for your child's school (by name or postcode)
2. Tap Log in with a PIN or parent code
3. Enter your parent code
4. Follow the instructions on the screen to create your account.

OR alternatively set up your account on the show my homework website:

<https://www.satchelone.com/login?signUp=true&userType=parent>

## Logging in via website:

<https://www.satchelone.com/login?signUp=true&userType=parent>



The screenshot shows a mobile browser interface for the SatchelOne website. At the top, the time is 16:31 and the URL is satchelone.com. The page is titled "Login" with a link for "Forgot password?". There are three tabs: "Staff", "Parent" (which is selected), and "Student". Below the tabs are two radio buttons: "I already have an account" (unselected) and "I don't have an account yet" (selected). There are three input fields: "Hawick High School", "Enter email address", and "Enter parent code (supplied by school)". Below these is a reCAPTCHA section with the text "I'm not a robot" and a checkbox. At the bottom of the form is a blue "Sign up" button. Below the form is a section titled "Need help logging in?" with a link for "Logging in as a parent" and a "Sign up" link.

1. Search for your child's school (by name or postcode)
2. Enter your parent code below
3. Tick "I am not a robot" and complete any security tasks if necessary.
4. Click Submit
5. Follow the instructions to create your account.

Your account is now set up! **You will no longer need your parent code.** Moving forward you can access your account using your email and password combination. See further instruction below.

### Parent code expired?

If you already have an account, you no longer need a parent code, simply reset your password.

If your code expired or got lost before you managed to create an account:

- you can request the parent code from the school

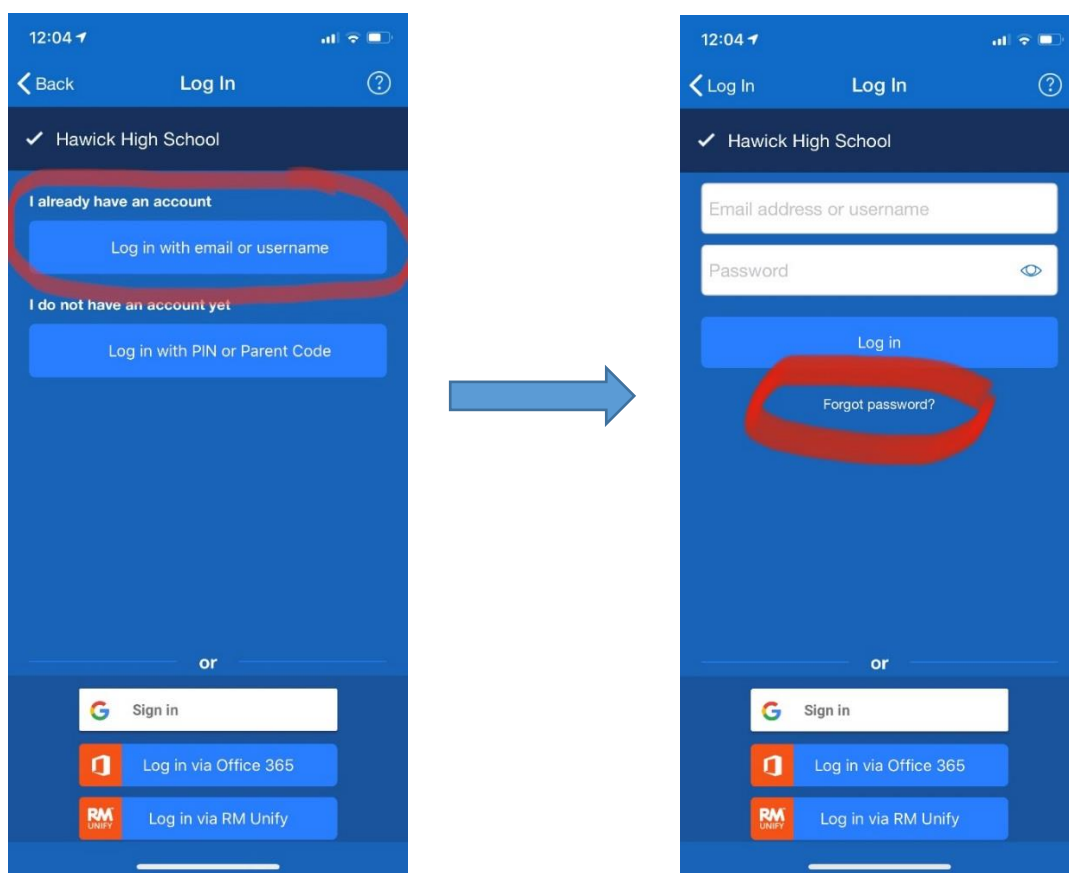
## Log in to your account once you have set an account up

Once you have created your account using your parent code, you can access your account on any device using your email address and password.

1. Go to our [login page](#) or open our mobile app
2. Enter your child's school (search by postcode)
3. Type your email address and password
4. Log in

## Forgot password?

To reset your password, click on "*Forgot password?*" on the [login page](#) or on the mobile app.



Type in your email and password reset email will be sent to you. Follow the instructions we sent you to create a new password.

**! Top tip:** If you do not see the password reset email in your inbox, you may want to check your junk or spam folder. If your email is not recognised, please contact the school directly.